



## P/N 7552001.200

Manual hose reel s. 500, for hot water, 100 bar, without hose. Drum width 460 mm. Inlet-outlet G 1" (f)

### AREAS OF USE

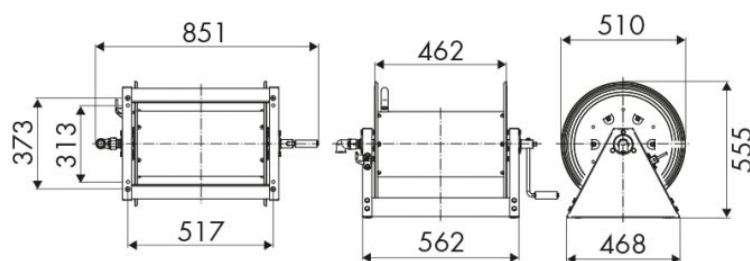
Agriculture, Manufacturing industry, Mining industry,  
Shipping and offshore, Railway transport

### FEATURES

Pressure	100 bar
Compatible fluids	water max 130 °C
Swivel joint	AISI 304 stainless steel
Seals	Viton®
Characteristic	fixed
Material	painted steel
Couplings	-
Hose	-
Ø and hose length	-
Inlet	G 1" (f)
Outlet	G 1" (f)
Reel flow path	AISI 304 stainless steel - zinc plated steel



### OVERALL DIMENSIONS (mm)



### HOSE REELS CAPACITY

Ø 1/4"	Ø 3/8"	Ø 1/2"	Ø 3/4"	Ø 1"
300 m	200 m	150 m	80 m	50 m