



ADVANCED FLUID  
MANAGEMENT SOLUTIONS

**RAASM S.p.a.**

Via Marangoni 33, 36022  
S. Zeno di Cassola (VI) Italy  
Tel. +39 0424 570891  
info@raasm.com

## P/N 7532001.100

Manual hose reel s. 500, for water and diesel, 20 bar, without hose. Drum width 320 mm. Inlet-outlet G 1" (f)

### AREAS OF USE

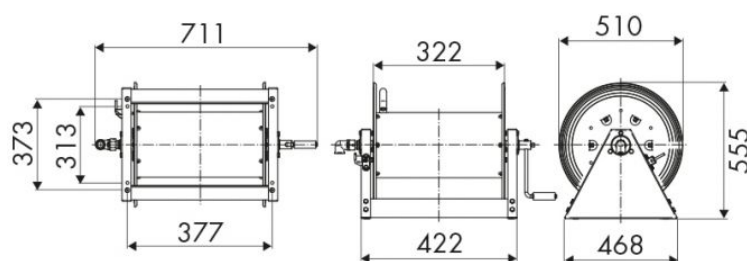
Agriculture, Manufacturing industry, Mining industry, Shipping and offshore, Railway transport

### FEATURES

Pressure	10 - 20 bar
Compatible fluids	air - water - diesel fuel
Swivel joint	brass
Seals	Viton®
Characteristic	fixed
Material	painted steel
Couplings	-
Hose	-
Ø and hose length	-
Inlet	G 1" (f)
Outlet	G 1" (f)
Reel flow path	brass - zinc plated steel



### OVERALL DIMENSIONS (mm)



### HOSE REELS CAPACITY

Ø 1/4"	Ø 3/8"	Ø 1/2"	Ø 3/4"	Ø 1"
200 m	130 m	100 m	50 m	30 m